

NEW JERSEY DEPARTMENT OF CORRECTIONS

Gary M. Lanigan, Commissioner



OFFENDER CHARACTERISTICS REPORT

ON JANUARY 2, 2014

Office of Policy and Planning
March 2014

INTRODUCTION

This report has been developed to provide information regarding offender characteristics in each correctional complex, major institution, and satellite housing-unit under the jurisdiction of the New Jersey Department of Corrections on January 2, 2014. The selected characteristics compiled in this report are Base Offense at Admission, Total Term at Admission, Ethnicity, Age, County of Commitment, and Mandatory Minimum Term.

The Prison Complex includes: New Jersey State Prison, Central Reception and Assignment Facility, East Jersey State Prison, Bayside State Prison, Mid-State Correctional Facility, Southern State Correctional Facility, Northern State Prison, South Woods State Prison, Edna Mahan Correctional Facility for Women and the Adult Diagnostic and Treatment Center (ADTC), a facility for adult male sex offenders.

NOTE: In the data tables, separate subtotals are provided for ADTC and Edna Mahan Correctional Facility for Women due to the interest in these unique populations. The remainder of the Prison Complex is labeled “Male Offenders in Other Facilities”.

The Youth Correctional Complex consists of Garden State Youth Correctional Facility, Albert C. Wagner Youth Correctional Facility and Mountainview Youth Correctional Facility.

“Halfway Houses, County Jails, St. Francis” include state-sentenced inmates housed in halfway houses, county jails, and Central Medical Unit (St. Francis Hospital).

“Not Coded” are records for offenders in the correctional system for whom admission characteristics data had not been entered into the computerized information system as of January 2, 2014.

HIGHLIGHTS

- *Fifty-seven percent (57%) of all New Jersey Department of Corrections inmates were committed for crimes against persons which include Homicide, Sexual Assault, Aggravated/Simple Assault, Robbery, Kidnapping, Other Sex Offenses and Other Person Offenses.*
- *Eighteen percent (18%) of all Department of Corrections inmates have been committed for narcotics law violations, including possession, sale and distribution. Eighty-three percent (83%) of all narcotics law violations are sale/distribution offenses.*
- *The median total term for Department of Corrections' inmates is 6 years.*
- *Thirty-six percent (36%) of all New Jersey Department of Corrections inmates were committed with total terms of 10 years or more. Of the total, five percent (5%) are serving Life Sentences with parole eligibility, and 71 offenders are serving Life Sentences without parole.*
- *Seventy-three percent (73%) of New Jersey Department of Corrections inmates housed in the State System have sentences that include mandatory minimum terms.*
- *Thirty-six percent (36%) of all inmates in the New Jersey Department of Corrections are 30 years of age or younger. The median age for inmates in all facilities is 34.*
- *Sixty percent (60%) of New Jersey Department of Corrections' inmates are Black, 23% White, 16% Hispanic, and 1% Asian.*
- *Of the 21 New Jersey counties, ten (Atlantic, Bergen, Camden, Essex, Hudson, Mercer, Middlesex, Monmouth, Passaic and Union) account for 79% of Total Department of Corrections inmates. Essex County is the highest contributor with 14%.*

NOTES

DUE TO SOFTWARE AND ROUNDING:

- **WORKSHEET ROW AND COLUMN TOTALS DO NOT ALWAYS EQUAL 100 PERCENT.**
- **PIE CHART PERCENTAGES DO NOT ALWAYS EQUAL 100%.**
- **PIE CHART PERCENTAGES MAY DIFFER SLIGHTLY FROM WORKSHEET PERCENTAGES.**
- **ACCOMPANYING NARRATIVES REFLECT PIE CHART PERCENTAGES.**

TOTAL INMATES IN NEW JERSEY STATE CORRECTIONAL INSTITUTIONS AND SATELLITE UNITS

TOTAL INMATES		22,318
PRISON COMPLEX	15,672	YOUTH COMPLEX
ADTC	567	GARDEN STATE TOTAL
Bayside – Main	1,176	MOUNTAINVIEW TOTAL
Bayside – Farm	687	Wagner – Main
Bayside – Ancora	348	Wagner – Ad Seg
BAYSIDE TOTAL	2,211	Wagner – Minimum Units
CRAF – Jones Farm	280	WAGNER TOTAL
CRAF – Reception	365	HALFWAY HOUSES, COUNTY JAILS, ST. FRANCIS
CRAF TOTAL	645	Halfway Houses
		County Jails
		Central Medical Unit (St. Francis)
EAST JERSEY TOTAL	1,359	
EDNA MAHAN TOTAL	752	
MIDSTATE TOTAL	700	
NJ STATE PRISON TOTAL	1,839	
Northern State – Main	1,814	
Northern State – Ad Seg Male	534	
NORTHERN STATE TOTAL	2,348	
SOUTHERN STATE TOTAL	1,865	
SOUTH WOODS TOTAL	3,386	

TABLE OF CONTENTS

<u>REPORT NAME</u>	<u>PAGE</u>
<i>OFFENDERS IN NEW JERSEY CORRECTIONAL INSTITUTIONS BY BASE OFFENSE</i>	7
<i>Prison Complex Offenders</i>	8-11
<i>Youth Complex Offenders</i>	12
<i>Offenders in Halfway Houses, County Jails and St. Francis Hospital</i>	13
 <i>OFFENDERS IN NEW JERSEY CORRECTIONAL INSTITUTIONS BY TOTAL TERM AT ADMISSION</i>	 14
<i>Prison Complex Offenders</i>	15-18
<i>Youth Complex Offenders</i>	19
<i>Offenders in Halfway Houses, County Jails and St. Francis Hospital</i>	20
 <i>OFFENDERS IN NEW JERSEY CORRECTIONAL INSTITUTIONS BY MANDATORY MINIMUM TERM</i>	 21
<i>Prison Complex Offenders</i>	22-25
<i>Youth Complex Offenders</i>	26
<i>Offenders in Halfway Houses, County Jails and St. Francis Hospital</i>	27
 <i>OFFENDERS IN NEW JERSEY CORRECTIONAL INSTITUTIONS BY AGE</i>	 28
<i>Prison Complex Offenders</i>	29-32
<i>Youth Complex Offenders</i>	33
<i>Offenders in Halfway Houses, County Jails and St. Francis Hospital</i>	34
 <i>OFFENDERS IN NEW JERSEY CORRECTIONAL INSTITUTIONS BY ETHNIC IDENTIFICATION</i>	 35
<i>Prison Complex Offenders</i>	36-39
<i>Youth Complex Offenders</i>	40
<i>Offenders in Halfway Houses, County Jails and St. Francis Hospital</i>	41
 <i>OFFENDERS IN NEW JERSEY CORRECTIONAL INSTITUTIONS BY COUNTY OF COMMITMENT</i>	 42
<i>Prison Complex Offenders</i>	43-46
<i>Youth Complex Offenders</i>	47
<i>Offenders in Halfway Houses, County Jails and St. Francis Hospital</i>	48

BASE OFFENSE

**OFFENDERS IN NEW JERSEY CORRECTIONAL INSTITUTIONS
ON JANUARY 2, 2014, BY BASE OFFENSE**

In these tabulations, the base offense is the most serious offense at the time of admission. These figures reflect base or controlling offenses at admission only and do not include any offenses in addition to the base offense in the case of multiple sentences at admission. Additional sentences imposed following initial admission to the state correctional system are not included in these data.

- Violent offenses include homicide, sexual assault, aggravated and simple assault, robbery, kidnapping, other sex offenses and other person offenses (i.e. terroristic threats, coercion, larceny from a person, death by auto and negligent manslaughter).
- Property offenses include burglary, arson, theft, forgery, embezzlement, and receiving / possessing stolen property.
- Public policy offenses include racketeering, gambling, corruption, perjury, escape, bail jumping, juvenile and family related offenses, and conspiracy.
- Weapons offenses include weapon possession and operation.
- Drug violations include distribution, manufacture, possession, and use of drugs. Virtually all drug offenses are for sale and distribution rather than for mere possession.

OFFENDERS IN CORRECTIONAL INSTITUTIONS BY BASE OFFENSE

Base Offense	Total		Male Offenders in Other Facilities		Youth Complex		ADTC		Edna Mahan		*Halfway Houses, County Jails, St. Francis	
	#	%	#	%	#	%	#	%	#	%	#	%
TOTAL OFFENDERS	22,318	100%	14,353	100%	3,774	100%	567	100%	752	100%	2,872	100%
Violent Offenses	12,691	57%	9,035	63%	1,961	52%	567	100%	434	58%	694	24%
Property Offenses	2,291	10%	1,447	10%	365	10%	0	0%	110	15%	369	13%
Public Policy	891	4%	568	4%	159	4%	0	0%	28	4%	136	5%
Weapons	2,255	10%	1,008	7%	759	20%	0	0%	27	4%	461	16%
Drugs	4,046	18%	2,278	16%	530	14%	0	0%	133	18%	1,105	38%
Not Coded	144	1%	17	0%	0	0%	0	0%	20	3%	107	4%

- Inmates with violent offenses comprise 63% of Male Offenders in Other Facilities, 52% of the Youth Complex, 100% of ADTC, 58% of Edna Mahan, and 24% of Halfway Houses, County Jails, and St. Francis.
- * Halfway Houses, County Jails, and Central Medical Unit (Saint Francis Hospital).

Prison Complex Offenders By Base Offense

Institution	Total	Violent Offenses	Homicide	Sexual Assault	Assault	Robbery	Kidnap	Other Sex	Other Person	Property	Public Policy	Weapons	Drugs	Not Coded
Bayside Main	1,176 100%	543 46%	115 10%	19 2%	115 10%	265 23%	7 1%	20 2%	2 0%	183 16%	66 6%	120 10%	264 22%	0 0%
Bayside Farm	687 100%	297 43%	77 11%	0 0%	85 12%	125 18%	4 1%	4 1%	2 0%	128 19%	35 5%	68 10%	159 23%	0 0%
Bayside Ancora	348 100%	130 37%	30 9%	0 0%	25 7%	72 21%	1 0%	1 0%	1 0%	58 17%	16 5%	47 14%	97 28%	0 0%
Bayside Total	2,211 100%	970 44%	222 10%	19 1%	225 10%	462 21%	12 1%	25 1%	5 0%	369 17%	117 5%	235 11%	520 24%	0 0%
CRAF Jones Farm	280 100%	23 8%	2 1%	0 0%	10 4%	9 3%	0 0%	2 1%	0 0%	121 43%	15 5%	0 0%	121 43%	0 0%
CRAF Reception	365 100%	166 45%	14 4%	26 7%	33 9%	41 11%	0 0%	49 13%	3 1%	52 14%	12 3%	32 9%	100 27%	3 1%
CRAF Total	645 100%	189 29%	16 2%	26 4%	43 7%	50 8%	0 0%	51 8%	3 0%	173 27%	27 4%	32 5%	221 34%	3 0%
East Jersey	1,359 100%	1,198 88%	639 47%	80 6%	59 4%	368 27%	47 3%	0 0%	5 0%	32 2%	18 1%	37 3%	74 5%	0 0%

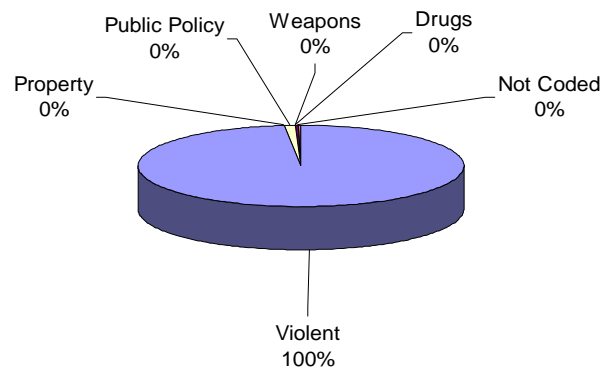
Prison Complex Offenders By Base Offense

Institution	Total	Violent Offenses	Homicide	Sexual Assault	Assault	Robbery	Kidnap	Other Sex	Other Person	Property	Public Policy	Weapons	Drugs	Not Coded
Midstate	700 100%	350 50%	17 2%	110 16%	51 7%	45 6%	7 1%	113 16%	7 1%	122 17%	41 6%	46 7%	141 20%	0 0%
NJ State Prison	1,839 100%	1,692 92%	1,167 63%	95 5%	67 4%	293 16%	58 3%	3 0%	9 0%	32 2%	23 1%	31 2%	47 3%	14 1%
Northern Main	1,814 100%	1,254 69%	408 22%	120 7%	171 9%	486 27%	34 2%	29 2%	6 0%	133 7%	84 5%	103 6%	240 13%	0 0%
Northern Ad. Seg. Male	534 100%	276 52%	53 10%	11 2%	61 11%	129 24%	6 1%	10 2%	6 1%	64 12%	42 8%	59 11%	93 17%	0 0%
Northern Total	2,348 100%	1,530 65%	461 20%	131 6%	232 10%	615 26%	40 2%	39 2%	12 1%	197 8%	126 5%	162 7%	333 14%	0 0%
Southern	1,865 100%	707 38%	84 5%	47 3%	223 12%	290 16%	10 1%	48 3%	5 0%	279 15%	103 6%	242 13%	534 29%	0 0%
South Woods	3,386 100%	2,399 71%	706 21%	364 11%	327 10%	817 24%	59 2%	110 3%	16 0%	243 7%	113 3%	223 7%	408 12%	0 0%
Subtotal Male Offenders in Other Facilities	14,353 100%	9,035 63%	3,312 23%	872 6%	1,227 9%	2,940 20%	233 2%	389 3%	62 0%	1,447 10%	568 4%	1008 7%	2,278 16%	17 0%

Prison Complex Offenders By Base Offense

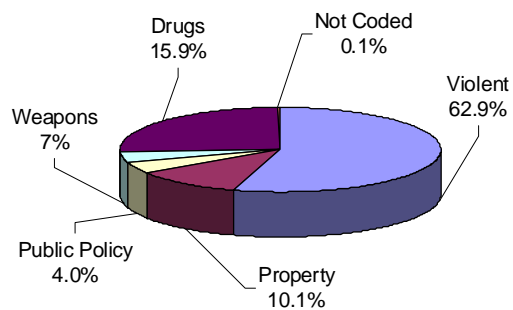
Institution	Total	Violent Offenses	Homicide	Sexual Assault	Assault	Robbery	Kidnap	Other Sex	Other Person	Property	Public Policy	Weapons	Drugs	Not Coded
ADTC	567	567	2	491	0	3	14	51	6	0	0	0	0	0
	100%	100%	0%	87%	0%	1%	2%	9%	1%	0%	0%	0%	0%	0%
Subtotal	14,920	9,602	3,314	1,363	1,227	2,943	247	440	68	1,447	568	1008	2,278	17
	100%	64%	22%	9%	8%	20%	2%	3%	0%	10%	4%	7%	15%	0%
Mahan - Female Prison	752	434	199	7	74	118	10	22	4	110	28	27	133	20
	100%	58%	26%	1%	10%	16%	1%	3%	1%	15%	4%	4%	18%	3%
Total Prison Complex	15,672	10,036	3,513	1,370	1,301	3,061	257	462	72	1,557	596	1035	2,411	37
	100%	64%	22%	9%	8%	20%	2%	3%	0%	10%	4%	7%	15%	0%

ADTC



Virtually all offenders at ADTC were committed for violent offenses.

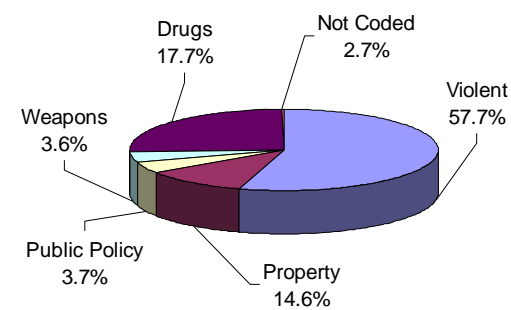
MALE OFFENDERS IN OTHER FACILITIES



Sixty-three percent (63%) of Male Offenders in Other Facilities were convicted of a violent offense.

Sixteen percent (16%) of all Male Offenders in Other Facilities were convicted of drug offenses.

FEMALE OFFENDERS



Violent offenses were the most frequent commitment-offenses at Edna Mahan (57.7%).

Eighteen percent (18%) of female inmates were committed for drug offenses.

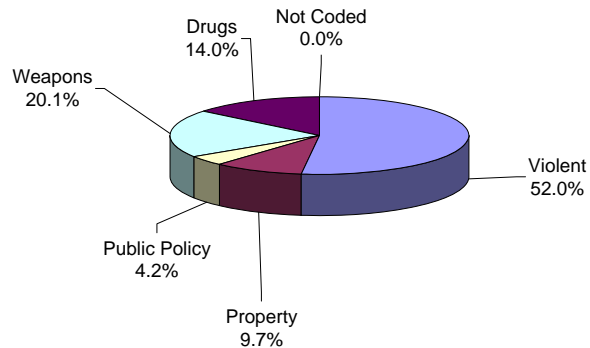
Youth Complex Offenders By Base Offense

Institution	Total	Violent Offenses	Homicide	Sexual Assault	Assault	Robbery	Kidnap	Other Sex	Other Person	Property	Public Policy	Weapons	Drugs	Not Coded
Garden State	1,756 100%	1043 59%	139 8%	73 4%	232 13%	527 30%	16 1%	49 3%	7 0%	125 7%	62 4%	316 18%	210 12%	0 0%
Mountainview	1,054 100%	385 37%	16 2%	11 1%	104 10%	234 22%	1 0%	15 1%	4 0%	141 13%	50 5%	275 26%	203 19%	0 0%
Wagner Main	575 100%	335 58%	51 9%	6 1%	83 14%	182 32%	3 1%	9 2%	1 0%	47 8%	33 6%	91 16%	69 12%	0 0%
Wagner Ad. Seg.	226 100%	135 60%	21 9%	5 2%	26 12%	76 34%	1 0%	6 3%	0 0%	22 10%	7 3%	43 19%	19 8%	0 0%
Wagner Minimum Units	163 100%	63 39%	10 6%	0 0%	16 10%	33 20%	3 2%	0 0%	1 1%	30 18%	7 4%	34 21%	29 18%	0 0%
Wagner Total	964 100%	533 55%	82 9%	11 1%	125 13%	291 30%	7 1%	15 2%	2 0%	99 10%	47 5%	168 17%	117 12%	0 0%
Total Youth Complex	3,774 100%	1,961 52%	237 6%	95 3%	461 12%	1,052 28%	24 1%	79 2%	13 0%	365 10%	159 4%	759 20%	530 14%	0 0%

Offenders In Halfway Houses, County Jails, and St. Francis By Base Offense

Institution	Total	Violent Offenses	Homicide	Sexual Assault	Assault	Robbery	Kidnap	Other Sex	Other Person	Property	Public Policy	Weapons	Drugs	Not Coded
Central Medical Unit	6	4	1	1	1	1	0	0	0	0	0	0	2	0
	100%	67%	17%	17%	17%	17%	0%	0%	0%	0%	0%	0%	33%	0%
County Jail	122	7	1	0	0	4	1	1	0	3	3	1	6	102
	100%	6%	1%	0%	0%	3%	1%	1%	0%	2%	2%	1%	5%	84%
Halfway House	2,744	683	91	0	172	404	2	12	2	366	133	460	1,097	5
	100%	25%	3%	0%	6%	15%	0%	0%	0%	13%	5%	17%	40%	0%
Total Halfway Houses, County Jails, St. Francis	2,872	694	93	1	173	409	3	13	2	369	136	461	1,105	107
	100%	24%	3%	0%	6%	14%	0%	0%	0%	13%	5%	16%	38%	4%

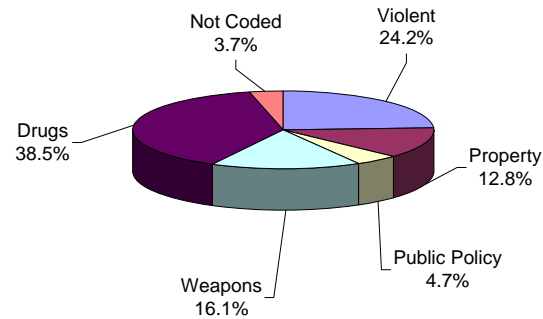
YOUTH COMPLEX



Fifty-two percent (52%) of offenders housed in the youth complex were incarcerated for violent offenses.

Fourteen percent (14%) of offenders housed in the youth complex were incarcerated for drug offenses and 9.7% for property offenses.

HALFWAY HOUSES, COUNTY JAILS, ST. FRANCIS



Offenders housed in county jails, halfway houses, and St. Francis are less serious offenders than the Male Offenders in Other Facilities (i.e. 24.2% violent offenders vs. 63% Male Offenders in Other Facilities with violent offenses).

Thirty-eight percent (38%) of offenders housed in Halfway Houses, County Jails, and St. Francis were committed for drug offenses.

TOTAL MAXIMUM TERM AT ADMISSION

**OFFENDERS IN NEW JERSEY CORRECTIONAL INSTITUTIONS
ON JANUARY 2, 2014, BY TOTAL TERM AT ADMISSION**

Total term at admission is the total maximum term imposed for each offender at the time of commitment from the community or from parole. This includes the aggregate term for those admitted with multiple sentences. Additional sentences received following initial admission are not reflected or included in the data.

OFFENDERS IN NEW JERSEY CORRECTIONAL INSTITUTIONS BY TOTAL TERM AT ADMISSION

Total Term	Total		Male Offenders in Other Facilities		Youth Complex		ADTC		Edna Mahan		Halfway Houses, County Jails, St. Francis	
	#	%	#	%	#	%	#	%	#	%	#	%
TOTAL OFFENDERS	22,318	100%	14,353	100%	3,774	100%	567	100%	752	100%	2,872	100%
1-2 Years	959	4%	701	5%	168	4%	4	1%	34	5%	52	2%
3 Years	3,189	14%	1,657	12%	877	23%	23	4%	157	21%	475	17%
4 Years	1,955	9%	1,105	8%	366	10%	19	3%	73	10%	392	14%
5 Years	3,913	18%	1,974	14%	989	26%	56	10%	124	16%	770	27%
6 Years	1,163	5%	594	4%	268	7%	24	4%	42	6%	235	8%
7 Years	1,275	6%	698	5%	271	7%	50	9%	34	5%	222	8%
8-9 Years	1,340	6%	796	6%	244	6%	68	12%	25	3%	207	7%
10 Years	1,323	6%	853	6%	175	5%	93	16%	40	5%	162	6%
11-14 Years	1,310	6%	916	6%	172	5%	63	11%	36	5%	123	4%
15 Years	677	3%	519	4%	62	2%	33	6%	22	3%	41	1%
16-20 Years	1,259	6%	1,024	7%	80	2%	59	10%	45	6%	51	2%
21+ Years	2,300	10%	2,079	14%	39	1%	72	13%	78	10%	32	1%
Life With Parole	1,151	5%	1,121	8%	0	0%	3	1%	26	3%	1	0%
Life Without Parole	71	0%	71	0%	0	0%	0	0%	0	0%	0	0%
Not Coded	433	2%	245	2%	63	2%	0	0%	16	2%	109	4%

Among New Jersey Adult Correctional Offenders:

- The median term for adult offenders is 6 years.
- Forty-five percent (45%) are serving terms of 1-5 years.
- Seventeen percent (17%) are serving terms of 6-9 years.
- Thirty-six percent (36%) are serving terms of 10 years or more, which includes 1,151 offenders serving life and 71 serving life without parole sentences.
- Two percent (2%) were not coded.

Prison Complex Offenders By Total Term At Admission

Institution	Total	1-2 Years	3 Years	4 Years	5 Years	6 Years	7 Years	8-9 Years	10 Years	11-14 Years	15 Years	16-20 Years	20+ Years	Life With Parole	Life Without Parole	Not Coded
Bayside Main	1,176 100%	67 6%	180 15%	133 11%	214 18%	66 6%	76 6%	95 8%	84 7%	77 7%	31 3%	60 5%	49 4%	15 1%	0 0%	29 2%
Bayside Farm	687 100%	54 8%	150 22%	91 13%	112 16%	26 4%	27 4%	31 5%	41 6%	38 6%	25 4%	39 6%	35 5%	0 0%	0 0%	18 3%
Bayside Ancora	348 100%	30 9%	61 18%	29 8%	68 20%	24 7%	21 6%	29 8%	22 6%	21 6%	12 3%	15 4%	6 2%	0 0%	0 0%	10 3%
Bayside Total	2,211 100%	151 7%	391 18%	253 11%	394 18%	116 5%	124 6%	155 7%	147 7%	136 6%	68 3%	114 5%	90 4%	15 1%	0 0%	57 3%
CRAF Jones Farm	280 100%	33 12%	88 31%	65 23%	50 18%	5 2%	6 2%	4 1%	3 1%	1 0%	0 0%	0 0%	0 0%	0 0%	0 0%	25 9%
CRAF Reception	365 100%	87 24%	70 19%	38 10%	60 16%	13 4%	17 5%	16 4%	7 2%	5 1%	3 1%	3 1%	1 0%	1 0%	0 0%	44 12%
CRAF Total	645 100%	120 19%	158 24%	103 16%	110 17%	18 3%	23 4%	20 3%	10 2%	6 1%	3 0%	3 0%	1 0%	1 0%	0 0%	69 11%
East Jersey	1,359 100%	4 0%	17 1%	7 1%	32 2%	12 1%	22 2%	52 4%	73 5%	135 10%	85 6%	257 19%	436 32%	225 17%	2 0%	0 0%

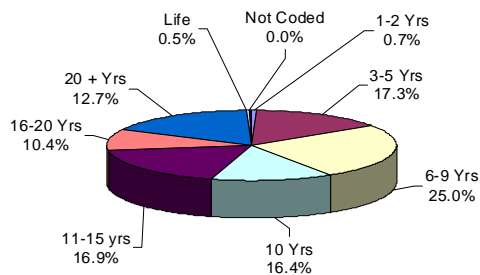
Prison Complex Offenders By Total Term At Admission

Institution	Total	1-2 Years	3 Years	4 Years	5 Years	6 Years	7 Years	8-9 Years	10 Years	11-14 Years	15 Years	16-20 Years	20+ Years	Life With Parole	Life Without Parole	Not Coded
Midstate	700 100%	86 12%	165 24%	103 15%	175 25%	49 7%	41 6%	32 5%	10 1%	13 2%	5 1%	2 0%	3 0%	0 0%	0 0%	16 2%
NJ State Prison	1,839 100%	8 0%	40 2%	18 1%	67 4%	16 1%	21 1%	21 1%	27 1%	40 2%	23 1%	74 4%	820 45%	578 31%	68 4%	18 1%
Northern Main	1,814 100%	59 3%	153 8%	109 6%	214 12%	76 4%	91 5%	110 6%	167 9%	180 10%	88 5%	182 10%	239 13%	134 7%	0 0%	12 1%
Northern Ad Seg Male	534 100%	23 4%	91 17%	46 9%	105 20%	36 7%	37 7%	37 7%	29 5%	33 6%	14 3%	29 5%	43 8%	9 2%	0 0%	2 0%
Northern Total	2,348 100%	82 3%	244 10%	155 7%	319 14%	112 5%	128 5%	147 6%	196 8%	213 9%	102 4%	211 9%	282 12%	143 6%	0 0%	14 1%
Southern	1,865 100%	131 7%	335 18%	244 13%	441 24%	118 6%	119 6%	138 7%	112 6%	81 4%	36 2%	40 2%	20 1%	10 1%	0 0%	40 2%
South Woods	3,386 100%	119 4%	307 9%	222 7%	436 13%	153 5%	220 6%	231 7%	278 8%	292 9%	197 6%	323 10%	427 13%	149 4%	1 0%	31 1%
Subtotal Male Offenders in Other Facilities	14,353 100%	701 5%	1,657 12%	1,105 8%	1,974 14%	594 4%	698 5%	796 6%	853 6%	916 6%	519 4%	1,024 7%	2,079 14%	1,121 8%	71 0%	245 2%

Prison Complex Offenders By Total Term At Admission

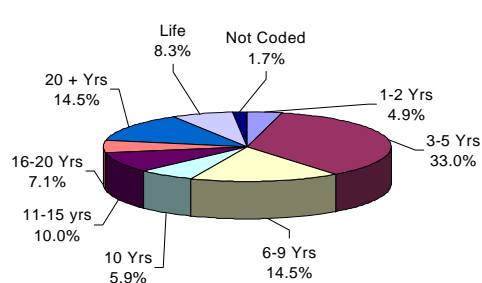
Institution	Total	1-2 Years	3 Years	4 Years	5 Years	6 Years	7 Years	8-9 Years	10 Years	11-14 Years	15 Years	16-20 Years	20+ Years	Life With Parole	Life Without Parole	Not Coded
ADTC	567 100%	4 1%	23 4%	19 3%	56 10%	24 4%	50 9%	68 12%	93 16%	63 11%	33 6%	59 10%	72 13%	3 1%	0 0%	0 0%
SUBTOTAL	14,920 100%	705 5%	1,680 11%	1,124 8%	2,030 14%	618 4%	748 5%	864 6%	946 6%	979 7%	552 4%	1,083 7%	2,151 14%	1,124 8%	71 0%	245 2%
Mahan - Female Prison	752 100%	34 5%	157 21%	73 10%	124 16%	42 6%	34 5%	25 3%	40 5%	36 5%	22 3%	45 6%	78 10%	26 3%	0 0%	16 2%
Total Prison Complex	15,672 100%	739 5%	1,837 12%	1,197 8%	2,154 14%	660 4%	782 5%	889 6%	986 6%	1,015 6%	574 4%	1,128 7%	2,229 14%	1,150 7%	71 0%	261 2%

ADTC



The median term at ADTC is 10 years.

MALE OFFENDERS IN OTHER FACILITIES

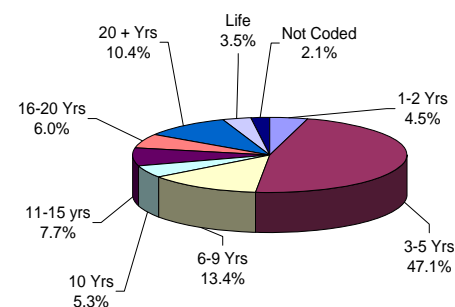


The median term for Male Offenders in Other Facilities is 7 years.

Thirty percent (30%) of all Male Offenders in Other Facilities are serving sentences of 16 years or more.

Eighty-four percent (84%) of all offenders at New Jersey State Prison are serving sentences of 16 years or more, with 578 Life With Parole and 68 Life Without Parole.

FEMALE OFFENDERS



The median term at Edna Mahan is 5 years.

Fifty-two percent (52%) of the female offenders at Edna Mahan Correctional Facility for Women are serving sentences of 5 years or less.

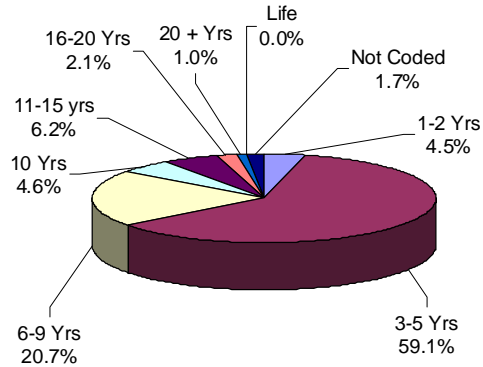
Youth Complex Offenders By Total Term At Admission

Institution	Total	1-2 Years	3 Years	4 Years	5 Years	6 Years	7 Years	8-9 Years	10 Years	11-14 Years	15 Years	16-20 Years	20+ Years	Life With Parole	Life Without Parole	Not Coded
Garden State	1,756 100%	70 4%	333 19%	149 8%	469 27%	131 7%	138 8%	133 8%	103 6%	98 6%	29 2%	53 3%	29 2%	0 0%	0 0%	21 1%
Mountainview	1,054 100%	46 4%	332 31%	131 12%	309 29%	90 9%	52 5%	45 4%	23 2%	11 1%	2 0%	0 0%	0 0%	0 0%	0 0%	13 1%
Wagner Main	575 100%	35 6%	106 18%	51 9%	118 21%	32 6%	50 9%	43 7%	35 6%	38 7%	22 4%	21 4%	5 1%	0 0%	0 0%	19 3%
Wagner Ad Seg	226 100%	10 4%	54 24%	15 7%	58 26%	12 5%	19 8%	19 8%	8 4%	13 6%	5 2%	6 3%	5 2%	0 0%	0 0%	2 1%
Wagner Minimum Units	163 100%	7 4%	52 32%	20 12%	35 21%	3 2%	12 7%	4 2%	6 4%	12 7%	4 2%	0 0%	0 0%	0 0%	0 0%	8 5%
Wagner Total	964 100%	52 5%	212 22%	86 9%	211 22%	47 5%	81 8%	66 7%	49 5%	63 7%	31 3%	27 3%	10 1%	0 0%	0 0%	29 3%
Total Youth Complex	3,774 100%	168 4%	877 23%	366 10%	989 26%	268 7%	271 7%	244 6%	175 5%	172 5%	62 2%	80 2%	39 1%	0 0%	0 0%	63 2%

Offenders In Halfway Houses, County Jails, and St. Francis By Total Term At Admission

Institution	Total	1-2 Years	3 Years	4 Years	5 Years	6 Years	7 Years	8-9 Years	10 Years	11-14 Years	15 Years	16-20 Years	20+ Years	Life	Capital	Not Coded
Central Medical Unit	6	0	1	0	1	0	0	0	1	1	0	0	1	1	0	0
	100%	0%	17%	0%	17%	0%	0%	0%	17%	17%	0%	0%	17%	17%	0%	0%
County Jail	122	6	9	3	4	0	1	0	0	0	0	0	0	0	0	99
	100%	5%	7%	2%	3%	0%	1%	0%	0%	0%	0%	0%	0%	0%	0%	81%
Halfway House	2,744	46	465	389	765	235	221	207	161	122	41	51	31	0	0	10
	100%	2%	17%	14%	28%	9%	8%	8%	6%	4%	1%	2%	1%	0%	0%	0%
Total Halfway Houses, County Jails, St. Francis	2,872	52	475	392	770	235	222	207	162	123	41	51	32	1	0	109
	100%	2%	17%	14%	27%	8%	8%	7%	6%	4%	1%	2%	1%	0%	0%	4%

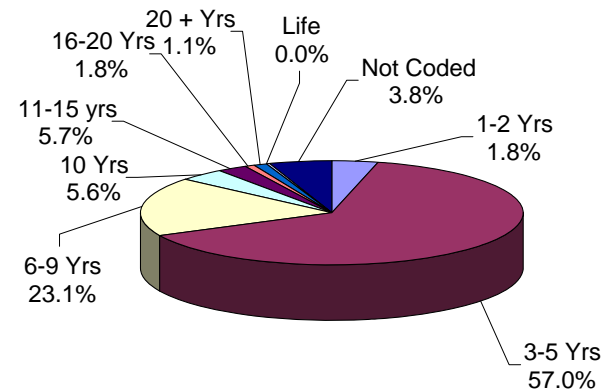
YOUTH COMPLEX



The median youth complex term is 5 years.

No youth complex offenders are currently serving life sentences.

HALFWAY HOUSES, COUNTY JAILS, ST. FRANCIS



The median term for offenders housed in Halfway Houses, County Jails, and St. Francis is 5 years.

Fifty-nine percent (59%) of offenders housed in Halfway Houses, County Jails, and St. Francis are serving terms of 5 years or less.

MANDATORY MINIMUM TERM

**OFFENDERS IN NEW JERSEY CORRECTIONAL INSTITUTIONS
ON JANUARY 2, 2014, BY MANDATORY MINIMUM TERM**

In New Jersey, since 1979, the courts have utilized mandatory minimum sentences. This means that an offender must serve the entire minimum sentence before being eligible for parole consideration. Mandatory minimum terms are not reduced by earned credits (commutation, minimum security, or work).

OFFENDERS IN CORRECTIONAL INSTITUTIONS BY MANDATORY MINIMUM TERM

Mandatory Minimum Term	Total		Male Offenders in Other Facilities		Youth Complex		ADTC		Edna Mahan		Halfway Houses, County Jails, St. Francis	
	#	%	#	%	#	%	#	%	#	%	#	%
TOTAL OFFENDERS	16,328	100%	10,495	100%	2,763	100%	463	100%	472	100%	2,135	100%
<18 Months	918	6%	351	3%	352	13%	0	0%	13	3%	202	9%
18 Months	366	2%	182	2%	82	3%	0	0%	5	1%	97	5%
2 Years	771	5%	392	4%	117	4%	2	0%	17	4%	243	11%
3 Years	2,784	17%	1,274	12%	704	25%	9	2%	72	15%	725	34%
4 Years	910	6%	509	5%	152	6%	10	2%	27	6%	212	10%
5 Years	1,751	11%	960	9%	403	15%	47	10%	57	12%	284	13%
6-9 Years	3,148	19%	1,930	18%	670	24%	202	44%	88	19%	258	12%
10 Years	205	1%	153	1%	21	1%	20	4%	4	1%	7	0%
11-14 Years	1,548	9%	1,176	11%	172	6%	84	18%	52	11%	64	3%
15 Years	257	2%	200	2%	15	1%	17	4%	11	2%	14	1%
16-19 Years	993	6%	850	8%	47	2%	37	8%	43	9%	16	1%
20-24 Years	504	3%	449	4%	19	1%	12	3%	18	4%	6	0%
25-29 Years	384	2%	363	3%	3	0%	13	3%	4	1%	1	0%
30 Years	821	5%	775	7%	3	0%	4	1%	34	7%	5	0%
30+ Years	968	6%	931	9%	3	0%	6	1%	27	6%	1	0%

- Seventy-three percent (73%) of all adult offenders have mandatory minimum terms (16,328 out of 22,318).
- The median mandatory minimum term is 5 years.
- Twenty-four percent (24%) of those with mandatory minimum terms have mandatory minimum terms of 15 years or more.

Prison Complex Offenders By Mandatory Minimum Term

Institution	Total	< 18 Months	18 Months	2 Years	3 Years	4 Years	5 Years	6-9 Years	10 Years	11-14 Years	15 Years	16-19 Years	20-24 Years	25-29 Years	30 Years	30+ Years
Bayside Main	774 100%	43 6%	18 2%	33 4%	151 20%	69 9%	110 14%	184 24%	14 2%	72 9%	13 2%	35 5%	11 1%	7 1%	13 2%	1 0%
Bayside Farm	401 100%	46 11%	17 4%	27 7%	72 18%	22 5%	40 10%	64 16%	2 0%	60 15%	9 2%	21 5%	8 2%	2 0%	11 3%	0 0%
Bayside Ancora	235 100%	18 8%	8 3%	15 6%	53 23%	17 7%	36 15%	53 23%	3 1%	18 8%	3 1%	7 3%	2 1%	0 0%	2 1%	0 0%
Bayside Total	1,410 100%	107 8%	43 3%	75 5%	276 20%	108 8%	186 13%	301 21%	19 1%	150 11%	25 2%	63 4%	21 1%	9 1%	26 2%	1 0%
CRAF Jones Farm	70 100%	11 16%	11 16%	25 36%	20 29%	0 0%	3 4%	0 0%	0 0%	0 0%	0 0%	0 0%	0 0%	0 0%	0 0%	0 0%
CRAF Reception	146 100%	9 6%	3 2%	16 11%	51 35%	21 14%	23 16%	18 12%	0 0%	4 3%	0 0%	0 0%	1 1%	0 0%	0 0%	0 0%
CRAF Total	216 100%	20 9%	14 6%	41 19%	71 33%	21 10%	26 12%	18 8%	0 0%	4 2%	0 0%	0 0%	1 0%	0 0%	0 0%	0 0%
East Jersey	1,276 100%	4 0%	0 0%	4 0%	23 2%	14 1%	34 3%	174 14%	23 2%	222 17%	48 4%	242 19%	129 10%	82 6%	191 15%	86 7%

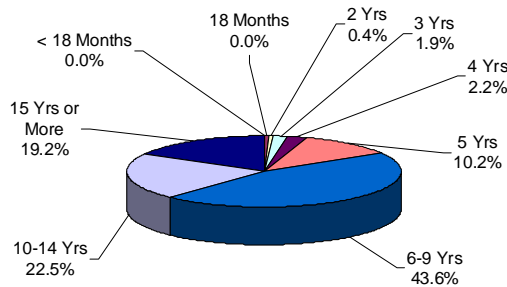
Prison Complex Offenders By Mandatory Minimum Term

Institution	Total	< 18 Months	18 Months	2 Years	3 Years	4 Years	5 Years	6-9 Years	10 Years	11-14 Years	15 Years	16-19 Years	20-24 Years	25-29 Years	30 Years	30+ Years
Midstate	322 100%	24 7%	16 5%	35 11%	111 34%	36 11%	42 13%	45 14%	2 1%	11 3%	0 0%	0 0%	0 0%	0 0%	0 0%	0 0%
NJ State Prison	1,672 100%	11 1%	3 0%	11 1%	36 2%	9 1%	30 2%	74 4%	11 1%	71 4%	26 2%	90 5%	87 5%	148 9%	304 18%	761 46%
Northern Main	1,417 100%	31 2%	19 1%	30 2%	127 9%	61 4%	140 10%	335 24%	28 2%	218 15%	28 2%	143 10%	67 5%	47 3%	110 8%	33 2%
Northern Ad Seg Male	368 100%	13 4%	12 3%	23 6%	75 20%	22 6%	50 14%	69 19%	8 2%	38 10%	4 1%	22 6%	12 3%	9 2%	6 2%	5 1%
Northern Total	1,785 100%	44 2%	31 2%	53 3%	202 11%	83 5%	190 11%	404 23%	36 2%	256 14%	32 2%	165 9%	79 4%	56 3%	116 6%	38 2%
Southern	1,172 100%	83 7%	49 4%	110 9%	302 26%	117 10%	185 16%	220 19%	11 1%	56 5%	6 1%	22 2%	5 0%	3 0%	3 0%	0 0%
South Woods	2,642 100%	58 2%	26 1%	63 2%	253 10%	121 5%	267 10%	694 26%	51 2%	406 15%	63 2%	268 10%	127 5%	65 2%	135 5%	45 2%
Subtotal Male Offenders in Other Facilities	10,495 100%	351 3%	182 2%	392 4%	1,274 12%	509 5%	960 9%	1,930 18%	153 1%	1,176 11%	200 2%	850 8%	449 4%	363 3%	775 7%	931 9%

Prison Complex Offenders By Mandatory Minimum Term

Institution	Total	< 18 Months	18 Months	2 Years	3 Years	4 Years	5 Years	6-9 Years	10 Years	11-14 Years	15 Years	16-19 Years	20-24 Years	25-29 Years	30 Years	30+ Years
ADTC	463 100%	0 0%	0 0%	2 0%	9 2%	10 2%	47 10%	202 44%	20 4%	84 18%	17 4%	37 8%	12 3%	13 3%	4 1%	6 1%
Subtotal	10,958 100%	351 3%	182 2%	394 4%	1,283 12%	519 5%	1,007 9%	2,132 19%	173 2%	1,260 11%	217 2%	887 8%	461 4%	376 3%	779 7%	937 9%
Mahan - Female Prison	472 100%	13 3%	5 1%	17 4%	72 15%	27 6%	57 12%	88 19%	4 1%	52 11%	11 2%	43 9%	18 4%	4 1%	34 7%	27 6%
Total Prison Complex	11,430 100%	364 3%	187 2%	411 4%	1,355 12%	546 5%	1,064 9%	2,220 19%	177 2%	1,312 11%	228 2%	930 8%	479 4%	380 3%	813 7%	964 8%

ADTC

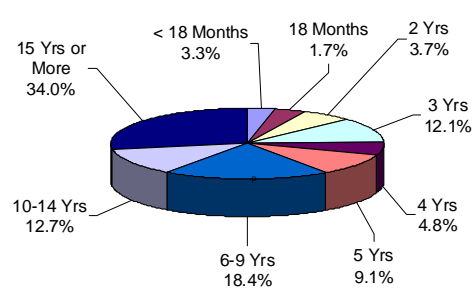


The median mandatory minimum term at ADTC is 8 years 6 months.

Eighty-two percent (82%) of the ADTC population have mandatory minimum sentences (463 of 567).

Forty-two percent (42%) have mandatory minimum terms of 10 years or longer.

MALE OFFENDERS IN OTHER FACILITIES

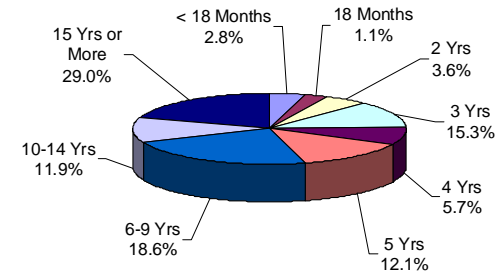


Of the 14,353 Male Offenders in Other Facilities, 73% (10,495) have mandatory minimum terms.

The median mandatory minimum term for Male Offenders in Other Facilities is 7 years (ADTC excluded).

Ninety-one percent (91%) of New Jersey State Prison inmates have mandatory minimum terms and 85% percent of those have minimum terms of 15 years or more.

FEMALE OFFENDERS



The median mandatory minimum term at Edna Mahan is 6 years.

At Edna Mahan, 62.7% of the females housed have minimum terms (472 of 752).

Forty-one percent (41%) of the females with mandatory minimum terms have terms of 5 years or less.

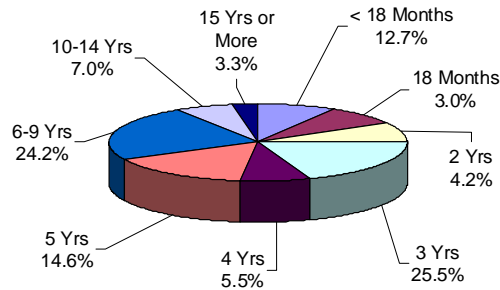
Youth Complex Offenders By Mandatory Minimum Term

Institution	Total	< 18 Months	18 Months	2 Years	3 Years	4 Years	5 Years	6-9 Years	10 Years	11-14 Years	15 Years	16-19 Years	20-24 Years	25-29 Years	30 Years	30+ Years
Garden State	1,344 100%	115 9%	30 2%	41 3%	335 25%	79 6%	208 15%	368 27%	14 1%	88 7%	10 1%	36 3%	14 1%	2 0%	1 0%	3 0%
Mountainview	752 100%	166 22%	32 4%	53 7%	230 31%	39 5%	104 14%	123 16%	0 0%	5 1%	0 0%	0 0%	0 0%	0 0%	0 0%	0 0%
Wagner Main	404 100%	34 8%	6 1%	14 3%	82 20%	22 5%	55 14%	120 30%	4 1%	53 13%	3 1%	7 2%	3 1%	1 0%	0 0%	0 0%
Wagner Ad Seg	162 100%	16 10%	6 4%	3 2%	33 20%	9 6%	29 18%	41 25%	1 1%	14 9%	2 1%	4 2%	2 1%	0 0%	2 1%	0 0%
Wagner Minimum Units	101 100%	21 21%	8 8%	6 6%	24 24%	3 3%	7 7%	18 18%	2 2%	12 12%	0 0%	0 0%	0 0%	0 0%	0 0%	0 0%
Wagner Total	667 100%	71 11%	20 3%	23 3%	139 21%	34 5%	91 14%	179 27%	7 1%	79 12%	5 1%	11 2%	5 1%	1 0%	2 0%	0 0%
Total Youth Complex	2,763 100%	352 13%	82 3%	117 4%	704 25%	152 6%	403 15%	670 24%	21 1%	172 6%	15 1%	47 2%	19 1%	3 0%	3 0%	3 0%

Offenders In Halfway Houses, County Jails, and St. Francis By Mandatory Minimum Term

Institution	Total	< 18 Months	18 Months	2 Years	3 Years	4 Years	5 Years	6-9 Years	10 Years	11-14 Years	15 Years	16-19 Years	20-24 Years	25-29 Years	30 Years	30+ Years
Central Medical Unit	5 100%	0 0%	0 0%	0 0%	1 20%	0 0%	1 20%	0 0%	0 0%	1 20%	0 0%	0 0%	0 0%	0 0%	1 20%	1 20%
County Jail	4 100%	2 50%	0 0%	0 0%	0 0%	0 0%	1 25%	1 25%	0 0%	0 0%	0 0%	0 0%	0 0%	0 0%	0 0%	0 0%
Halfway House	2,126 100%	200 9%	97 5%	243 11%	724 34%	212 10%	282 13%	257 12%	7 0%	63 3%	14 1%	16 1%	6 0%	1 0%	4 0%	0 0%
Total Halfway Houses, County Jails, St. Francis	2,135 100%	202 9%	97 5%	243 11%	725 34%	212 10%	284 13%	258 12%	7 0%	64 3%	14 1%	16 1%	6 0%	1 0%	5 0%	1 0%

YOUTH COMPLEX

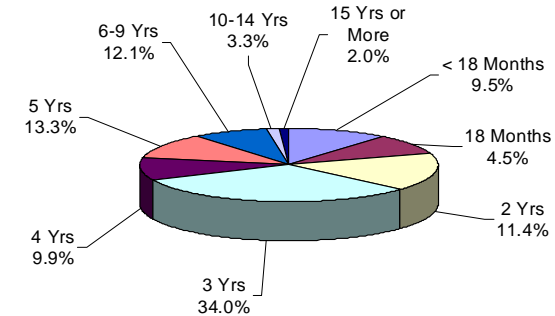


The median mandatory minimum term for youth complex offenders is 4 years.

Among youth complex offenders, 73% have mandatory minimum terms (2,763 of 3,774).

Of these, 66% have mandatory minimum terms of 5 years or less.

HALFWAY HOUSES COUNTY JAILS, ST. FRANCIS



The median mandatory minimum term for inmates in Halfway Houses, County Jails, and St. Francis is 3 years.

Seventy-four percent (74%) of the offenders in Halfway Houses, County Jails, and St. Francis have mandatory minimum terms (2,135 of 2,872).

Of these, 83% have mandatory minimum terms of 5 years or less.

AGE GROUP

**OFFENDERS IN NEW JERSEY CORRECTIONAL INSTITUTIONS
ON JANUARY 2, 2014, BY AGE**

The age of the offender is the chronological age as of January 2, 2014.

OFFENDERS IN CORRECTIONAL INSTITUTIONS BY AGE

Age	Total		Male Offenders in Other Facilities		Youth Complex		ADTC		Edna Mahan		Halfway Houses, County Jails, St. Francis	
	#	%	#	%	#	%	#	%	#	%	#	%
TOTAL OFFENDERS	22,318	100%	14,353	100%	3,774	100%	567	100%	752	100%	2,872	100%
< 17 Years	3	0%	0	0%	3	0%	0	0%	0	0%	0	0%
17 Years	5	0%	0	0%	5	0%	0	0%	0	0%	0	0%
18-20 Years	460	2%	34	0%	392	10%	2	0%	11	1%	21	1%
21-22 Years	1,308	6%	219	2%	914	24%	13	2%	34	5%	128	4%
23-24 Years	1,606	7%	398	3%	964	26%	11	2%	46	6%	187	7%
25-27 Years	2,383	11%	946	7%	1,062	28%	29	5%	80	11%	266	9%
28-30 Years	2,336	10%	1,519	11%	401	11%	26	5%	77	10%	313	11%
31-33 Years	2,269	10%	1,778	12%	27	1%	32	6%	87	12%	345	12%
34-36 Years	2,119	9%	1,690	12%	2	0%	36	6%	62	8%	329	11%
37-39 Years	1,711	8%	1,348	9%	2	0%	41	7%	61	8%	259	9%
40-44 Years	2,705	12%	2,146	15%	2	0%	75	13%	107	14%	375	13%
45-49 Years	2,158	10%	1,705	12%	0	0%	79	14%	84	11%	290	10%
50-54 Years	1,548	7%	1,248	9%	0	0%	68	12%	55	7%	177	6%
55-59 Years	816	4%	677	5%	0	0%	46	8%	25	3%	68	2%
60-64 Years	443	2%	369	3%	0	0%	45	8%	12	2%	17	1%
65+ Years	361	2%	276	2%	0	0%	64	11%	11	1%	10	0%
Not Coded	87	0%	0	0%	0	0%	0	0%	0	0%	87	3%

- The median age for all inmates is 34 years.
- Two percent (2%) of all offenders are 20 years of age or younger.
- Thirty-four percent (34%) of all offenders are between the ages of 21-30.
- Twenty-seven percent (27%) of all offenders are 31 to 39 years of age.
- Thirty-seven percent (37%) of all offenders are 40 years of age and older.

Prison Complex Offenders By Age

Institution	Total	< 17 Years	17 Years	18-20 Years	21-22 Years	23-24 Years	25-27 Years	28-30 Years	31-33 Years	34-36 Years	37-39 Years	40-44 Years	45-49 Years	50-54 Years	55-59 Years	60-64 Years	65+ Years	Not Coded
Bayside Main	1,176 100%	0 0%	0 0%	0 0%	8 1%	31 3%	110 9%	173 15%	191 16%	146 12%	111 9%	177 15%	103 9%	75 6%	29 2%	18 2%	4 0%	0 0%
Bayside Farm	687 100%	0 0%	0 0%	0 0%	9 1%	8 1%	44 6%	70 10%	91 13%	94 14%	57 8%	113 16%	92 13%	71 10%	25 4%	11 2%	2 0%	0 0%
Bayside Ancora	348 100%	0 0%	0 0%	0 0%	7 2%	10 3%	19 5%	35 10%	37 11%	45 13%	45 13%	82 24%	37 11%	17 5%	11 3%	1 0%	2 1%	0 0%
Bayside Total	2,211 100%	0 0%	0 0%	0 0%	24 1%	49 2%	173 8%	278 13%	319 14%	285 13%	213 10%	372 17%	232 10%	163 7%	65 3%	30 1%	8 0%	0 0%
CRAF Jones Farm	280 100%	0 0%	0 0%	0 0%	0 0%	0 0%	8 3%	26 9%	45 16%	37 13%	27 10%	41 15%	45 16%	36 13%	11 4%	4 1%	0 0%	0 0%
CRAF Reception	365 100%	0 0%	0 0%	5 1%	16 4%	21 6%	36 10%	46 13%	50 14%	39 11%	38 10%	45 12%	32 9%	21 6%	8 2%	6 2%	2 1%	0 0%
CRAF Total	645 100%	0 0%	0 0%	5 1%	16 2%	21 3%	44 7%	72 11%	95 15%	76 12%	65 10%	86 13%	77 12%	57 9%	19 3%	10 2%	2 0%	0 0%
East Jersey	1,359 100%	0 0%	0 0%	1 0%	1 0%	22 2%	52 4%	86 6%	143 11%	151 11%	144 11%	223 16%	187 14%	153 11%	94 7%	60 4%	42 3%	0 0%

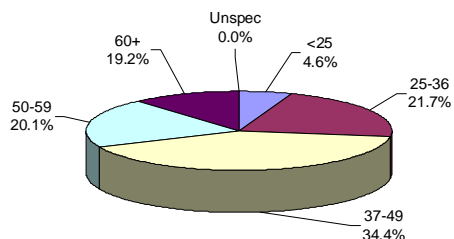
Prison Complex Offenders By Age

Institution	Total	< 17 Years	17 Years	18-20 Years	21-22 Years	23-24 Years	25-27 Years	28-30 Years	31-33 Years	34-36 Years	37-39 Years	40-44 Years	45-49 Years	50-54 Years	55-59 Years	60-64 Years	65+ Years	Not Coded
Midstate	700 100%	0 0%	0 0%	0 0%	1 0%	0 0%	12 2%	39 6%	97 14%	105 15%	61 9%	120 17%	104 15%	80 11%	54 8%	18 3%	9 1%	0 0%
NJ State Prison	1,839 100%	0 0%	0 0%	10 1%	29 2%	47 3%	128 7%	176 10%	171 9%	191 10%	168 9%	289 16%	234 13%	172 9%	94 5%	65 4%	65 4%	0 0%
Northern Main	1,814 100%	0 0%	0 0%	5 0%	26 1%	62 3%	131 7%	170 9%	196 11%	202 11%	175 10%	272 15%	221 12%	178 10%	87 5%	53 3%	36 2%	0 0%
Northern Ad Seg Male	534 100%	0 0%	0 0%	4 1%	34 6%	39 7%	36 7%	75 14%	70 13%	56 10%	52 10%	73 14%	46 9%	28 5%	16 3%	3 1%	2 0%	0 0%
Northern Total	2,348 100%	0 0%	0 0%	9 0%	60 3%	101 4%	167 7%	245 10%	266 11%	258 11%	227 10%	345 15%	267 11%	206 9%	103 4%	56 2%	38 2%	0 0%
Southern	1,865 100%	0 0%	0 0%	0 0%	21 1%	45 2%	132 7%	252 14%	290 16%	262 14%	179 10%	282 15%	208 11%	118 6%	50 3%	18 1%	8 0%	0 0%
South Woods	3,386 100%	0 0%	0 0%	9 0%	67 2%	113 3%	238 7%	371 11%	397 12%	362 11%	291 9%	429 13%	396 12%	299 9%	198 6%	112 3%	104 3%	0 0%
Subtotal Male Offenders in Other Facilities	14,353 100%	0 0%	0 0%	34 0%	219 2%	398 3%	946 7%	1,519 11%	1,778 12%	1,690 12%	1,348 9%	2,146 15%	1,705 12%	1,248 9%	677 5%	369 3%	276 2%	0 0%

Prison Complex Offenders By Age

Institution	Total	< 17 Years	17 Years	18-20 Years	21-22 Years	23-24 Years	25-27 Years	28-30 Years	31-33 Years	34-36 Years	37-39 Years	40-44 Years	45-49 Years	50-54 Years	55-59 Years	60-64 Years	65+ Years	Not Coded
ADTC	567 100%	0 0%	0 0%	2 0%	13 2%	11 2%	29 5%	26 5%	32 6%	36 6%	41 7%	75 13%	79 14%	68 12%	46 8%	45 8%	64 11%	0 0%
Subtotal	14,920 100%	0 0%	0 0%	36 0%	232 2%	409 3%	975 7%	1,545 10%	1,810 12%	1,726 12%	1,389 9%	2,221 15%	1,784 12%	1,316 9%	723 5%	414 3%	340 2%	0 0%
Mahan - Female Prison	752 100%	0 0%	0 0%	11 1%	34 5%	46 6%	80 11%	77 10%	87 12%	62 8%	61 8%	107 14%	84 11%	55 7%	25 3%	12 2%	11 1%	0 0%
Total Prison Complex	15,672 100%	0 0%	0 0%	47 0%	266 2%	455 3%	1,055 7%	1,622 10%	1,897 12%	1,788 11%	1,450 9%	2,328 15%	1,868 12%	1,371 9%	748 5%	426 3%	351 2%	0 0%

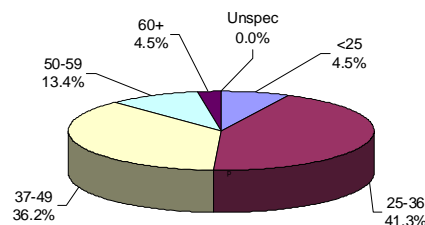
ADTC



The median age at ADTC is 46 years.

Thirty-nine percent (39%) of the ADTC offenders are 50 years of age or older. This may be compared with 18% of Male Offenders in Other Facilities and 14% of female (Edna Mahan) offenders.

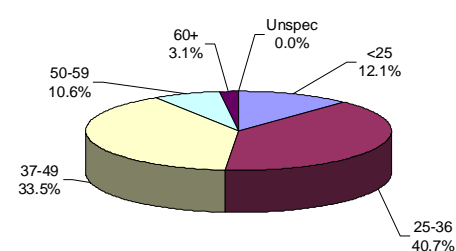
MALE OFFENDERS IN OTHER FACILITIES



The median age for Male Offenders in Other Facilities is 38 years.

Forty-one percent (41%) of Male Offenders in Other Facilities are age 25 to 36 (ADTC excluded).

FEMALE OFFENDERS



The median age for female inmates (Edna Mahan) is 36 years.

Forty-one percent (41%) of the women at Edna Mahan are age 25 to 36.

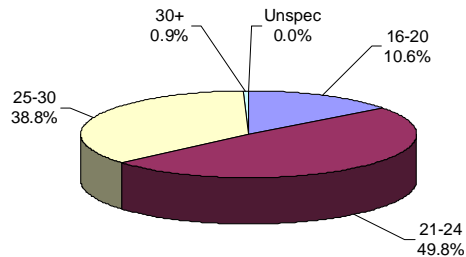
Youth Complex Offenders By Age

Institution	Total	< 17 Years	17 Years	18-20 Years	21-22 Years	23-24 Years	25-27 Years	28-30 Years	31-33 Years	34-36 Years	37-39 Years	40-44 Years	45-49 Years	50-54 Years	55-59 Years	60-64 Years	65+ Years	Not Coded
Garden State	1,756 100%	3 0%	5 0%	161 9%	404 23%	433 25%	529 30%	200 11%	16 1%	2 0%	2 0%	1 0%	0 0%	0 0%	0 0%	0 0%	0 0%	0 0%
Mountainview	1,054 100%	0 0%	0 0%	143 14%	293 28%	271 26%	252 24%	92 9%	3 0%	0 0%	0 0%	0 0%	0 0%	0 0%	0 0%	0 0%	0 0%	0 0%
Wagner Main	575 100%	0 0%	0 0%	45 8%	135 23%	170 30%	160 28%	59 10%	6 1%	0 0%	0 0%	0 0%	0 0%	0 0%	0 0%	0 0%	0 0%	0 0%
Wagner Ad Seg	226 100%	0 0%	0 0%	31 14%	49 22%	60 27%	68 30%	17 8%	0 0%	0 0%	0 0%	1 0%	0 0%	0 0%	0 0%	0 0%	0 0%	0 0%
Wagner Minimum Units	163 100%	0 0%	0 0%	12 7%	33 20%	30 18%	53 33%	33 20%	2 1%	0 0%	0 0%	0 0%	0 0%	0 0%	0 0%	0 0%	0 0%	0 0%
Wagner Total	964 100%	0 0%	0 0%	88 9%	217 23%	260 27%	281 29%	109 11%	8 1%	0 0%	0 0%	1 0%	0 0%	0 0%	0 0%	0 0%	0 0%	0 0%
Total Youth Complex	3,774 100%	3 0%	5 0%	392 10%	914 24%	964 26%	1,062 28%	401 11%	27 1%	2 0%	2 0%	2 0%	0 0%	0 0%	0 0%	0 0%	0 0%	0 0%

Offenders In Halfway Houses, County Jails, and St. Francis By Age

Institution	Total	< 17 Years	17 Years	18-20 Years	21-22 Years	23-24 Years	25-27 Years	28-30 Years	31-33 Years	34-36 Years	37-39 Years	40-44 Years	45-49 Years	50-54 Years	55-59 Years	60-64 Years	65+ Years	Not Coded
Central Medical Unit	6	0	0	0	0	1	0	0	0	0	0	2	1	0	2	0	0	0
	100%	0%	0%	0%	0%	17%	0%	0%	0%	0%	0%	33%	17%	0%	33%	0%	0%	0%
County Jail	122	0	0	2	2	1	6	7	4	3	1	4	3	1	0	1	0	87
	100%	0%	0%	2%	2%	1%	5%	6%	3%	2%	1%	3%	2%	1%	0%	1%	0%	71%
Halfway House	2,744	0	0	19	126	185	260	306	341	326	258	369	286	176	66	16	10	0
	100%	0%	0%	1%	5%	7%	9%	11%	12%	12%	9%	13%	10%	6%	2%	1%	0%	0%
Total Halfway Houses, County Jails, St. Francis	2,872	0	0	21	128	187	266	313	345	329	259	375	290	177	68	17	10	87
	100%	0%	0%	1%	4%	7%	9%	11%	12%	11%	9%	13%	10%	6%	2%	1%	0%	3%

YOUTH COMPLEX

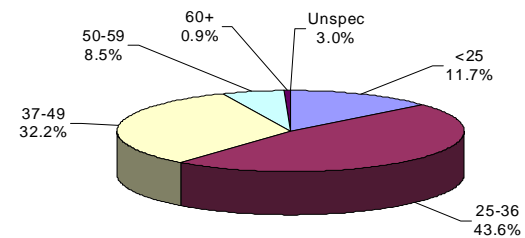


The median age for the youth complex is 24 years.

Eighty-nine percent (89%) of all youth complex inmates are between the ages of 21 and 30.

Sixty percent (60%) are less than 25 years of age.

HALFWAY HOUSES, COUNTY JAILS, ST. FRANCIS



The median age for offenders in Halfway Houses, County Jails, and St. Francis is 35 years.

The median age for offenders housed in county jails is 30 years; while offenders in halfway houses have a median age of 35 years.

RACE/ETHNIC IDENTIFICATION

**OFFENDERS IN NEW JERSEY CORRECTIONAL INSTITUTIONS
ON JANUARY 2, 2014, BY RACE/ETHNIC IDENTIFICATION**

In these tabulations, a Hispanic is a person of Mexican, Puerto Rican, Cuban, South American or other Spanish culture or origin (Spain or Portugal) regardless of complexion.

OFFENDERS IN CORRECTIONAL INSTITUTIONS BY RACE/ETHNIC IDENTIFICATION

Ethnic Identification	Total		Male Offenders in Other Facilities		Youth Complex		ADTC		Edna Mahan		Halfway Houses, County Jails, St. Francis	
	#	%	#	%	#	%	#	%	#	%	#	%
TOTAL OFFENDERS	22,318	100%	14,353	100%	3,774	100%	567	100%	752	100%	2,872	100%
Black	13,475	60%	8,643	60%	2,447	65%	122	22%	370	49%	1,893	66%
White	5,113	23%	3,205	22%	794	21%	292	51%	280	37%	542	19%
Hispanic	3,494	16%	2,410	17%	508	13%	142	25%	92	12%	342	12%
Asian	140	1%	89	1%	24	1%	11	2%	8	1%	8	0%
American Indian	9	0%	6	0%	1	0%	0	0%	2	0%	0	0%
Other or Not Coded	87	0%	0	0%	0	0%	0	0%	0	0%	87	3%

- Sixty (60%) percent of all state correctional institution offenders were Black, 23% were White, 16% were Hispanic, and 1% were Asian.

Prison Complex Offenders By Race/Ethnic Identification

Institution	Total	Black	White	Hispanic	Asian	American Indian	Other or Not Coded
Bayside Main	1,176 100%	722 61%	236 20%	215 18%	3 0%	0 0%	0 0%
Bayside Farm	687 100%	426 62%	162 24%	94 14%	5 1%	0 0%	0 0%
Bayside Ancora	348 100%	224 64%	73 21%	50 14%	1 0%	0 0%	0 0%
Bayside Total	2,211 100%	1,372 62%	471 21%	359 16%	9 0%	0 0%	0 0%
CRAF Jones Farm	280 100%	126 45%	122 44%	31 11%	1 0%	0 0%	0 0%
CRAF Reception	365 100%	205 56%	110 30%	45 12%	5 1%	0 0%	0 0%
CRAF Total	645 100%	331 51%	232 36%	76 12%	6 1%	0 0%	0 0%
East Jersey	1,359 100%	868 64%	233 17%	254 19%	3 0%	1 0%	0 0%

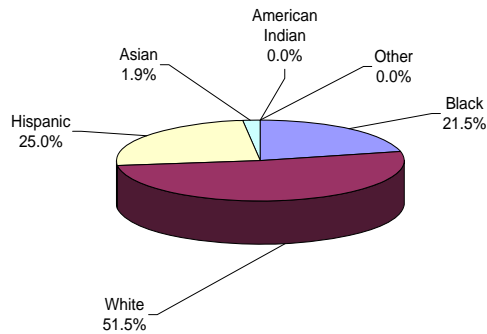
Prison Complex Offenders By Race/Ethnic Identification

Institution	Total	Black	White	Hispanic	Asian	American Indian	Other or Not Coded
Midstate	700 100%	347 50%	235 34%	107 15%	9 1%	2 0%	0 0%
NJ State Prison	1,839 100%	1,204 65%	346 19%	270 15%	18 1%	1 0%	0 0%
Northern Main	1,814 100%	1,139 63%	293 16%	375 21%	7 0%	0 0%	0 0%
Northern Ad Seg Male	534 100%	345 65%	110 21%	79 15%	0 0%	0 0%	0 0%
Northern Total	2,348 100%	1,484 63%	403 17%	454 19%	7 0%	0 0%	0 0%
Southern	1,865 100%	1,118 60%	439 24%	297 16%	11 1%	0 0%	0 0%
South Woods	3,386 100%	1,919 57%	846 25%	593 18%	26 1%	2 0%	0 0%
Subtotal Male Offenders in Other Facilities	14,353 100%	8,643 60%	3,205 22%	2,410 17%	89 1%	6 0%	0 0%

Prison Complex Offenders By Race/Ethnic Identification

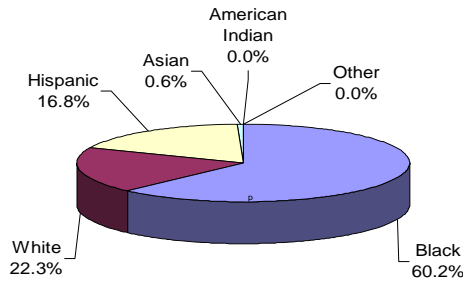
Institution	Total	Black	White	Hispanic	Asian	American Indian	Other or Not Coded
ADTC	567 100%	122 22%	292 51%	142 25%	11 2%	0 0%	0 0%
Subtotal	14,920 100%	8,765 59%	3,497 23%	2,552 17%	100 1%	6 0%	0 0%
Mahan - Female Prison	752 100%	370 49%	280 37%	92 12%	8 1%	2 0%	0 0%
Total Prison Complex	15,672 100%	9,135 58%	3,777 24%	2,644 17%	108 1%	8 0%	0 0%

ADTC



White offenders comprised 51.5% of the offenders at ADTC.

MALE OFFENDERS IN OTHER FACILITIES

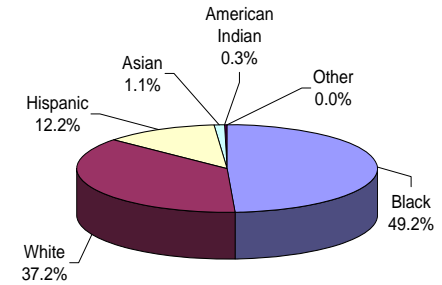


The largest proportion of Black male offenders in a major facility was at New Jersey State Prison (65%).

The largest proportion of White male offenders at a major facility was at CRAF (36%), ADTC excluded.

The largest proportion of Hispanic male offenders at a major facility was both at Northern and at East Jersey (19%), (ADTC excluded).

FEMALE OFFENDERS



Black offenders comprised 49.2% of the population at Edna Mahan. This may be compared with Black offenders comprising 60.2% of the Male Offenders in Other Facilities.

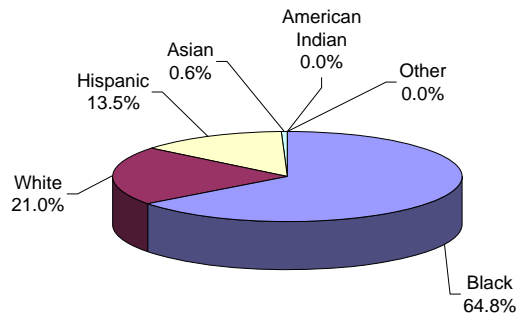
Youth Complex Offenders By Race/Ethnic Identification

Institution	Total	Black	White	Hispanic	Asian	American Indian	Other or Not Coded
Garden State	1,756 100%	1,149 65%	338 19%	260 15%	9 1%	0 0%	0 0%
Mountainview	1,054 100%	660 63%	278 26%	105 10%	11 1%	0 0%	0 0%
Wagner Main	575 100%	381 66%	97 17%	95 17%	2 0%	0 0%	0 0%
Wagner Ad Seg	226 100%	158 70%	37 16%	30 13%	1 0%	0 0%	0 0%
Wagner Minimum Units	163 100%	99 61%	44 27%	18 11%	1 1%	1 1%	0 0%
Wagner Total	964 100%	638 66%	178 18%	143 15%	4 0%	1 0%	0 0%
Total Youth Complex	3,774 100%	2,447 65%	794 21%	508 13%	24 1%	1 0%	0 0%

Offenders In Halfway Houses, County Jails, and St. Francis By Race/Ethnic Identification

Institution	Total	Black	White	Hispanic	Asian	American Indian	Other or Not Coded
Central Medical Unit	6 100%	3 50%	2 33%	1 17%	0 0%	0 0%	0 0%
County Jail	122 100%	20 16%	8 7%	5 4%	2 2%	0 0%	87 71%
Halfway House	2,744 100%	1,870 68%	532 19%	336 12%	6 0%	0 0%	0 0%
Total Halfway Houses, County Jails, St. Francis	2,872 100%	1,893 66%	542 19%	342 12%	8 0%	0 0%	87 3%

YOUTH COMPLEX

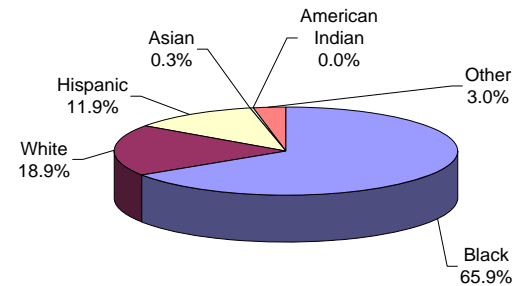


The largest proportion of Black offenders in the youth complex facilities was housed at Wagner (66%).

The largest proportion of White offenders in the youth complex facilities was housed at Mountainview (26%).

The largest proportion of Hispanic offenders in the youth complex facilities was housed both at Wagner and Garden State (15%).

HALFWAY HOUSES, COUNTY JAILS, ST. FRANCIS



Race and ethnicity for inmates assigned to Halfway Houses, County Jails, and St. Francis was roughly equivalent to that for the total adult inmate population.

COUNTY OF COMMITMENT

**OFFENDERS IN NEW JERSEY CORRECTIONAL INSTITUTIONS
ON JANUARY 2, 2014, BY COUNTY OF COMMITMENT**

OFFENDERS IN NEW JERSEY CORRECTIONAL INSTITUTIONS BY COUNTY OF COMMITMENT

County of Commitment	Total		Male Offenders in Other Facilities		Youth Complex		ADTC		Edna Mahan		Halfway Houses, County Jails, St. Francis	
	#	%	#	%	#	%	#	%	#	%	#	%
TOTAL OFFENDERS	22,318	100%	14,353	100%	3,774	100%	567	100%	752	100%	2,872	100%
Atlantic	1,708	8%	1,132	8%	236	6%	30	5%	68	9%	242	8%
Bergen	892	4%	603	4%	106	3%	45	8%	25	3%	113	4%
Burlington	741	3%	477	3%	136	4%	26	5%	31	4%	71	2%
Camden	2,531	11%	1,593	11%	487	13%	50	9%	89	12%	312	11%
Cape May	387	2%	246	2%	57	2%	7	1%	21	3%	56	2%
Cumberland	541	2%	381	3%	70	2%	15	3%	9	1%	66	2%
Essex	3,158	14%	2,163	15%	571	15%	34	6%	68	9%	322	11%
Gloucester	414	2%	255	2%	71	2%	16	3%	16	2%	56	2%
Hudson	1,683	8%	1,096	8%	292	8%	28	5%	55	7%	212	7%
Hunterdon	108	0%	75	1%	7	0%	7	1%	8	1%	11	0%
Mercer	1,224	5%	749	5%	243	6%	23	4%	53	7%	156	5%
Middlesex	1,795	8%	1,115	8%	338	9%	52	9%	74	10%	216	8%
Monmouth	1,177	5%	727	5%	200	5%	36	6%	53	7%	161	6%
Morris	356	2%	233	2%	53	1%	23	4%	13	2%	34	1%
Ocean	827	4%	551	4%	103	3%	45	8%	35	5%	93	3%
Passaic	1,566	7%	989	7%	291	8%	53	9%	37	5%	196	7%
Salem	233	1%	139	1%	41	1%	8	1%	4	1%	41	1%
Somerset	382	2%	248	2%	62	2%	4	1%	18	2%	50	2%
Sussex	156	1%	91	1%	32	1%	5	1%	9	1%	19	1%
Union	2,046	9%	1,281	9%	350	9%	40	7%	54	7%	321	11%
Warren	176	1%	107	1%	27	1%	16	3%	6	1%	20	1%
Not Coded	217	1%	102	1%	1	0%	4	1%	6	1%	104	4%

- Essex County has the highest percentage of commitments among Male Offenders in Other Facilities (15%), and the youth complex (15%).
- Camden County has the highest percentage of commitments at Edna Mahan (12%).
- Camden, Middlesex, and Passaic have the highest percentage of commitments at ADTC (9%).
- Camden, Essex, and Union have the highest percentage of commitments (11%) at Halfway Houses, County Jails and Saint Francis Hospital.
- Two counties, Essex and Camden, combine to comprise a fourth of total DOC commitments.

Prison Complex Offenders By County Of Commitment

Institution	Total	Atl	Ber	Burl	Cam	Cape May	Cum	Ess	Glou	Hud	Hunt	Mer	Mid	Mon	Mor	Oc	Pas	Sal	Som	Sus	Un	War	Not Coded
Bayside Main	1,176 100%	103 9%	48 4%	35 3%	155 13%	22 2%	39 3%	175 15%	33 3%	84 7%	3 0%	64 5%	93 8%	48 4%	16 1%	55 5%	63 5%	9 1%	19 2%	6 1%	96 8%	10 1%	0 0%
Bayside Farm	687 100%	68 10%	28 4%	17 2%	110 16%	14 2%	13 2%	112 16%	7 1%	42 6%	2 0%	27 4%	42 6%	32 5%	12 2%	22 3%	52 8%	5 1%	12 2%	4 1%	56 8%	9 1%	1 0%
Bayside Ancora	348 100%	25 7%	8 2%	9 3%	46 13%	8 2%	10 3%	32 9%	12 3%	30 9%	1 0%	16 5%	32 9%	22 6%	7 2%	18 5%	29 8%	2 1%	7 2%	1 0%	32 9%	1 0%	0 0%
Bayside Total	2,211 100%	196 9%	84 4%	61 3%	311 14%	44 2%	62 3%	319 14%	52 2%	156 7%	6 0%	107 5%	167 8%	102 5%	35 2%	95 4%	144 7%	16 1%	38 2%	11 0%	184 8%	20 1%	1 0%
CRAF Jones Farm	280 100%	24 9%	16 6%	6 2%	34 12%	2 1%	3 1%	8 3%	4 1%	25 9%	5 2%	10 4%	33 12%	18 6%	3 1%	21 8%	17 6%	0 0%	4 1%	3 1%	39 14%	5 2%	0 0%
CRAF Reception	365 100%	21 6%	16 4%	20 5%	24 7%	6 2%	13 4%	39 11%	3 1%	28 8%	5 1%	28 8%	35 10%	19 5%	8 2%	18 5%	27 7%	5 1%	7 2%	2 1%	32 9%	6 2%	3 1%
CRAF Total	645 100%	45 7%	32 5%	26 4%	58 9%	8 1%	16 2%	47 7%	7 1%	53 8%	10 2%	38 6%	68 11%	37 6%	11 2%	39 6%	44 7%	5 1%	11 2%	5 1%	71 11%	11 2%	3 0%
East Jersey	1,359 100%	65 5%	61 4%	39 3%	109 8%	8 1%	21 2%	307 23%	13 1%	111 8%	8 1%	67 5%	99 7%	84 6%	29 2%	37 3%	101 7%	1 0%	27 2%	8 1%	144 11%	6 0%	14 1%

Prison Complex Offenders By County Of Commitment

Institution	Total	Atl	Ber	Burl	Cam	Cape May	Cum	Ess	Glou	Hud	Hunt	Mer	Mid	Mon	Mor	Oc	Pas	Sal	Som	Sus	Un	War	Not Coded
Midstate	700 100%	57 8%	33 5%	38 5%	79 11%	12 2%	8 1%	75 11%	15 2%	52 7%	11 2%	34 5%	66 9%	40 6%	19 3%	29 4%	48 7%	7 1%	11 2%	7 1%	46 7%	12 2%	1 0%
NJ State Prison	1,839 100%	118 6%	104 6%	73 4%	148 8%	21 1%	53 3%	336 18%	15 1%	119 6%	4 0%	125 7%	126 7%	88 5%	22 1%	79 4%	122 7%	15 1%	25 1%	14 1%	154 8%	8 0%	70 4%
Northern Main	1,814 100%	81 4%	94 5%	32 2%	128 7%	21 1%	35 2%	370 20%	11 1%	186 10%	8 0%	78 4%	176 10%	92 5%	33 2%	53 3%	159 9%	8 0%	41 2%	4 0%	192 11%	8 0%	4 0%
Northern Ad Seg Male	534 100%	53 10%	20 4%	14 3%	60 11%	12 2%	18 3%	73 14%	10 2%	47 9%	2 0%	29 5%	33 6%	23 4%	6 1%	19 4%	40 7%	7 1%	9 2%	3 1%	52 10%	4 1%	0 0%
Northern Total	2,348 100%	134 6%	114 5%	46 2%	188 8%	33 1%	53 2%	443 19%	21 1%	233 10%	10 0%	107 5%	209 9%	115 5%	39 2%	72 3%	199 8%	15 1%	50 2%	7 0%	244 10%	12 1%	4 0%
Southern	1,865 100%	204 11%	56 3%	69 4%	233 12%	49 3%	57 3%	203 11%	42 2%	149 8%	9 0%	78 4%	157 8%	98 5%	21 1%	58 3%	121 6%	30 2%	25 1%	20 1%	172 9%	14 1%	0 0%
South Woods	3,386 100%	313 9%	119 4%	125 4%	467 14%	71 2%	111 3%	433 13%	90 3%	223 7%	17 1%	193 6%	223 7%	163 5%	57 2%	142 4%	210 6%	50 1%	61 2%	19 1%	266 8%	24 1%	9 0%
Subtotal Male Offenders in Other Facilities	14,353 100%	1,132 8%	603 4%	477 3%	1,593 11%	246 2%	381 3%	2,163 15%	255 2%	1,096 8%	75 1%	749 5%	1,115 8%	727 5%	233 2%	551 4%	989 7%	139 1%	248 2%	91 1%	1,281 9%	107 1%	102 1%

Prison Complex Offenders By County Of Commitment

Institution	Total	Atl	Ber	Burl	Cam	Cape May	Cum	Ess	Glou	Hud	Hunt	Mer	Mid	Mon	Mor	Oc	Pas	Sal	Som	Sus	Un	War	Not Coded
ADTC	567 100%	30 5%	45 8%	26 5%	50 9%	7 1%	15 3%	34 6%	16 3%	28 5%	7 1%	23 4%	52 9%	36 6%	23 4%	45 8%	53 9%	8 1%	4 1%	5 1%	40 7%	16 3%	4 1%
Subtotal	14,920 100%	1,162 8%	648 4%	503 3%	1,643 11%	253 2%	396 3%	2,197 15%	271 2%	1,124 8%	82 1%	772 5%	1,167 8%	763 5%	256 2%	596 4%	1,042 7%	147 1%	252 2%	96 1%	1,321 9%	123 1%	106 1%
Mahan - Female Prison	752 100%	68 9%	25 3%	31 4%	89 12%	21 3%	9 1%	68 9%	16 2%	55 7%	8 1%	53 7%	74 10%	53 7%	13 2%	35 5%	37 5%	4 1%	18 2%	9 1%	54 7%	6 1%	6 1%
Total Prison Complex	15,672 100%	1,230 8%	673 4%	534 3%	1,732 11%	274 2%	405 3%	2,265 14%	287 2%	1,179 8%	90 1%	825 5%	1241 8%	816 5%	269 2%	631 4%	1,079 7%	151 1%	270 2%	105 1%	1,375 9%	129 1%	112 1%

Youth Complex Offenders By County Of Commitment

Institution	Total	Atl	Ber	Burl	Cam	Cape May	Cum	Ess	Glou	Hud	Hunt	Mer	Mid	Mon	Mor	Oc	Pas	Sal	Som	Sus	Un	War	Not Coded
Garden State	1,756 100%	131 7%	35 2%	59 3%	257 15%	29 2%	39 2%	237 13%	33 2%	127 7%	3 0%	136 8%	154 9%	106 6%	17 1%	42 2%	122 7%	25 1%	27 2%	9 1%	153 9%	14 1%	1 0%
Mountainview	1,054 100%	44 4%	42 4%	50 5%	95 9%	12 1%	10 1%	172 16%	14 1%	97 9%	3 0%	45 4%	107 10%	52 5%	22 2%	28 3%	103 10%	8 1%	23 2%	11 1%	112 11%	4 0%	0 0%
Wagner Main	575 100%	26 5%	19 3%	13 2%	81 14%	10 2%	9 2%	101 18%	14 2%	37 6%	1 0%	46 8%	50 9%	29 5%	13 2%	15 3%	42 7%	4 1%	8 1%	3 1%	48 8%	6 1%	0 0%
Wagner Ad Seg	226 100%	22 10%	3 1%	9 4%	26 12%	2 1%	7 3%	38 17%	5 2%	19 8%	0 0%	6 3%	19 8%	6 3%	0 0%	12 5%	12 5%	1 0%	2 1%	7 3%	28 12%	2 1%	0 0%
Wagner Minimum Units	163 100%	13 8%	7 4%	5 3%	28 17%	4 2%	5 3%	23 14%	5 3%	12 7%	0 0%	10 6%	8 5%	7 4%	1 1%	6 4%	12 7%	3 2%	2 1%	2 1%	9 6%	1 1%	0 0%
Wagner Total	964 100%	61 6%	29 3%	27 3%	135 14%	16 2%	21 2%	162 17%	24 2%	68 7%	1 0%	62 6%	77 8%	42 4%	14 1%	33 3%	66 7%	8 1%	12 1%	12 1%	85 9%	9 1%	0 0%
Total Youth Complex	3,774 100%	236 6%	61 2%	39 1%	109 3%	8 0%	21 1%	307 8%	13 0%	111 3%	8 0%	67 2%	99 3%	84 2%	29 1%	37 1%	101 3%	1 0%	27 1%	8 0%	144 4%	6 0%	14 0%

Offenders In Halfway Houses, County Jails, and St. Francis By County Of Commitment

Institution	Total	Atl	Ber	Burl	Cam	Cape May	Cum	Ess	Glou	Hud	Hunt	Mer	Mid	Mon	Mor	Oc	Pas	Sal	Som	Sus	Un	War	Not Coded
Central Medical Unit	6 100%	0 0%	2 33%	0 0%	1 17%	0 0%	0 0%	0 0%	0 0%	0 0%	1 17%	0 0%	0 0%	0 0%	0 0%	0 0%	0 0%	0 0%	0 0%	0 0%	2 33%	0 0%	0 0%
County Jail	122 100%	5 4%	1 1%	1 1%	1 1%	0 0%	0 0%	4 3%	0 0%	0 0%	0 0%	2 2%	2 2%	1 1%	0 0%	0 0%	0 0%	0 0%	0 0%	1 1%	2 2%	0 0%	102 84%
Halfway House	2,744 100%	237 9%	110 4%	70 3%	310 11%	56 2%	66 2%	318 12%	56 2%	212 8%	10 0%	154 6%	214 8%	160 6%	34 1%	93 3%	196 7%	41 1%	50 2%	18 1%	317 12%	20 1%	2 0%
Total Halfway Houses, County Jails, St. Francis	2,872 100%	242 8%	113 4%	71 2%	312 11%	56 2%	66 2%	322 11%	56 2%	212 7%	11 0%	156 5%	216 8%	161 6%	34 1%	93 3%	196 7%	41 1%	50 2%	19 1%	321 11%	20 1%	104 4%